

## DCCOM/1 Commissioning Wizard



### Advanced DALI Addressing and Configuration

The DALIcontrol DALI Commissioning Wizard is a computer based software application that steps you through the commissioning of a Digital Addressable Lighting Interface (DALI) line.

The Commissioning Wizard enables you to test network wiring, find existing light fittings and easily add new ones. New fittings are automatically addressed and can be easily found using visual identification. Addressed fittings can be rearranged into a logical order manually or using the auto-order feature.

Fittings can be assigned to DALI groups and be given preset levels for DALI scenes. Other settings such as "Power On Level", "Maximum Level", "Minimum Level", "System Fail Level", "Fade Rate" and "Fade Time" are easily configured for a ballast, a group or the whole line. All settings are read from and written directly to the fittings. DALI emergency devices are fully supported.

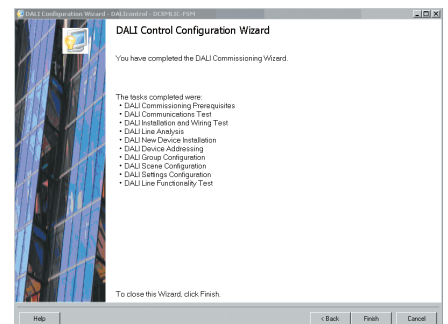
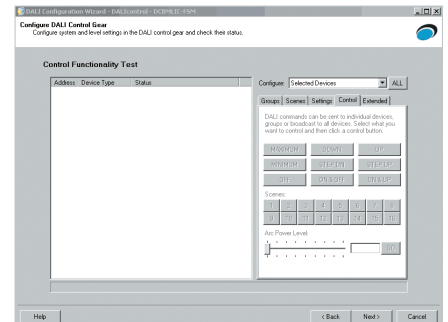
The Commissioning Wizard connects to a DALI line in two ways; via an Ethernet connection to a controller or via a serial connection using a serial DCDALCI communications interface.

### Requirements

- Microsoft Windows XP, Vista or Windows 7 (with .NET Framework)
- Ethernet interface connected to a DCBM line controller or serial (COM) compact interface connected to a DCDALCI communications interface.

### Features

- Commissioning directly, over Ethernet or via serial connection
- Quickly test field wiring
- Easily address any DALI device
- Organise fittings in a logical order
- Configure settings
- Comprehensive testing functions
- Quickly replace an existing fitting.



### Clipsal Australia Pty Ltd

A member of Schneider Electric

#### Head Office

33-37 Port Wakefield Road,  
Gepps Cross, South Australia 5094

#### Postal Address

PO Box 132  
Enfield Plaza, South Australia 5085

Website [www.dalicontrol.com](http://www.dalicontrol.com)

Contact your local Schneider Electric office for sales and technical support. [www.clipsal.com/trade/contact\\_us](http://www.clipsal.com/trade/contact_us)

You can find this data sheet and many others online in PDF format at:  
[www.dalicontrol.com](http://www.dalicontrol.com)

**clipsal.com**

Clipsal Australia Pty Ltd reserves the right to change specifications, modify designs and discontinue items without incurring obligation and whilst every effort is made to ensure that descriptions, specifications and other information in this catalogue are correct, no warranty is given in respect thereof and the company shall not be liable for any error therein.

© Clipsal Australia Pty Ltd

This material is copyright under Australian and international laws. Except as permitted under the relevant law, no part of this work may be reproduced by any process without prior written permission of and acknowledgement to Clipsal Australia Pty Ltd.